



# Lead and Arsenic exposure

Susan Buchanan, MD, MPH  
University of Illinois at Chicago  
School of Public Health

**SCHOOL OF  
PUBLIC HEALTH**



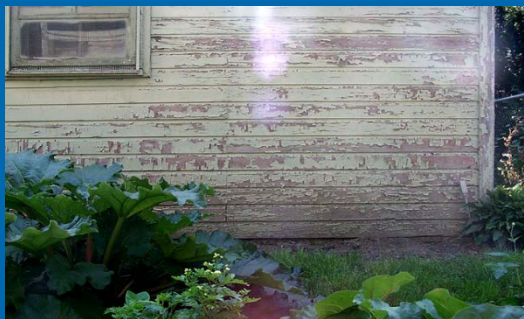
# Lead in Paint and Gasoline



1978 lead paint ban

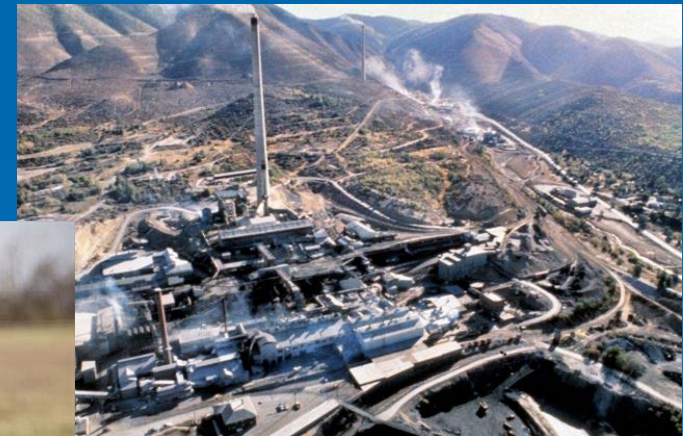
1976 leaded gas phase-out

# Common Sources of Lead





# Common sources of arsenic

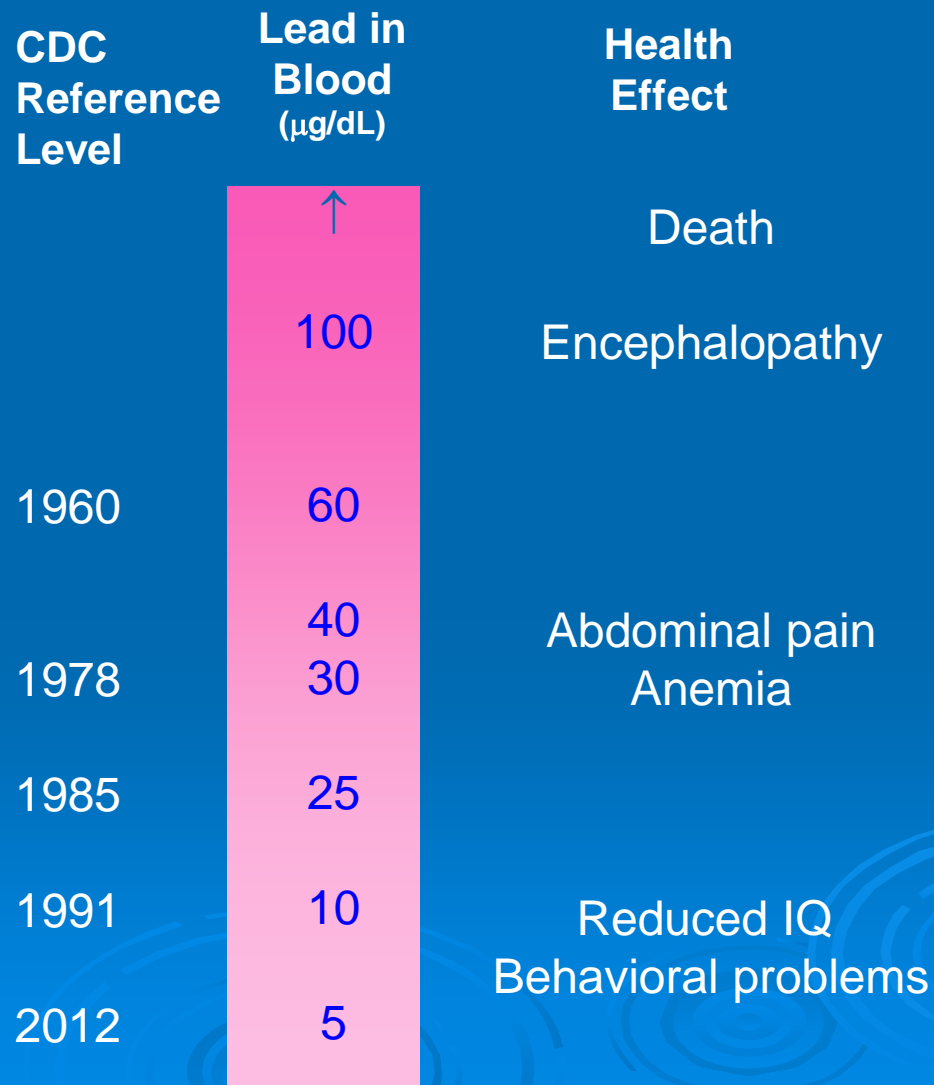


# Children's touching and mouthing behaviors

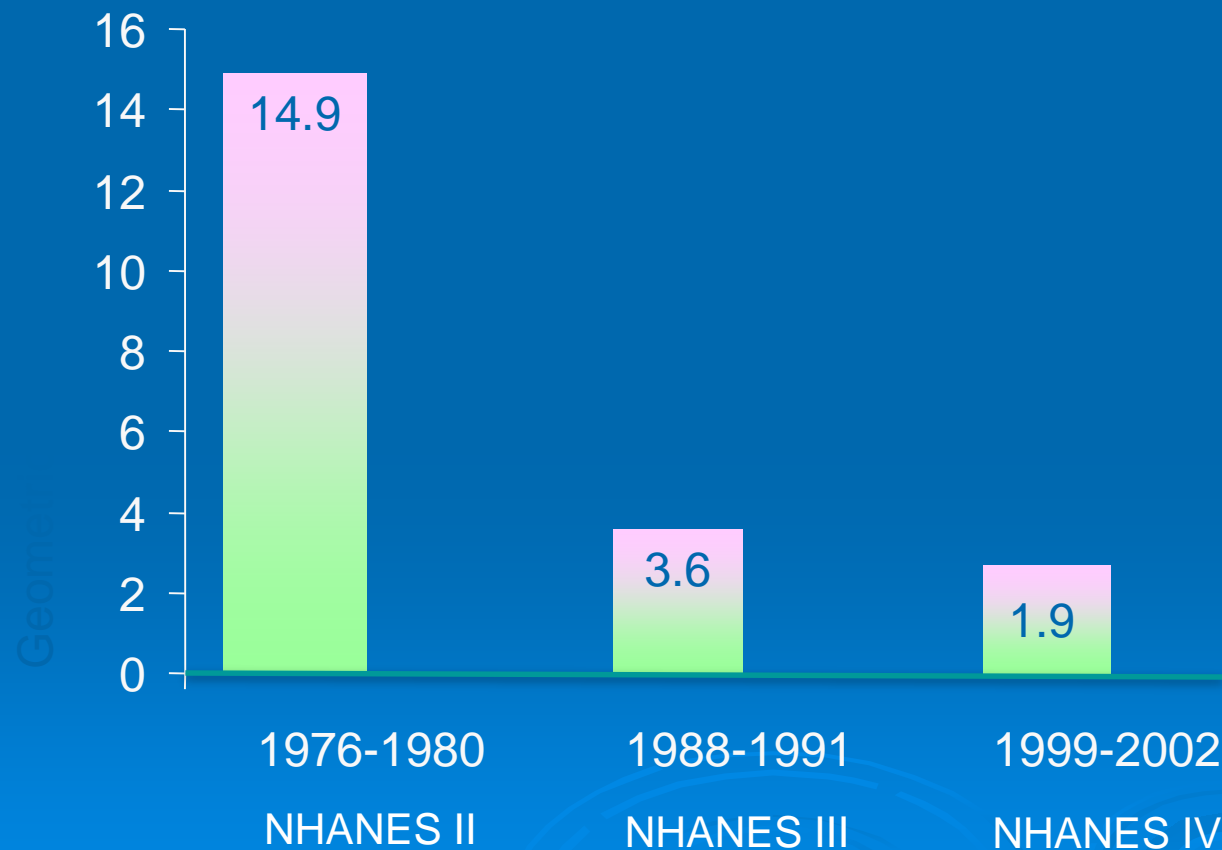


- touches to surfaces 83/hr
- hand to mouth area 35/hr
- hand/object in mouth 21/hr

# Lead Exposure

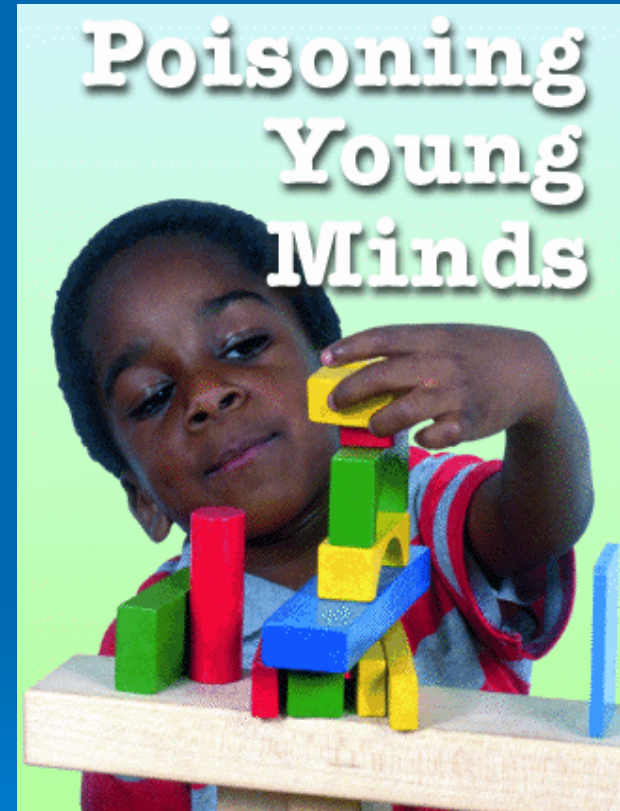


# Children 1 to 5 years Blood Lead Level (BLL)



# Health Effects of Lead

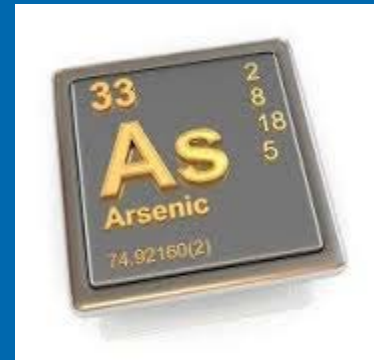
- No “safe” blood lead level for neurobehavioral effects
  - Loss of IQ
  - Behavioral problems
  - Poor school performance





# Health effects of arsenic

- Cancer
  - liver, bladder, and lungs
- Nerve damage
- Skin rash



# Prevention

## ➤ \*REMOVE FROM EXPOSURE\*

- Wash hands frequently
- Wash toys, wet mop
- Yearly blood lead test

